



# PRO

Photo editing manual



IMAGE  
RETOUCH

# PRO

This service requires the use of several skills such as facial beauty, removal of disturbing objects composition or shape corrections.

You will have to provide 2 retouched images that must be retouched images that must be different, in cropping and possibly in colour tone.

Black & white technic can be used, but with colour toning.

Maximum duration: 60 minutes

## What should I do.

A retouching in colour

A colour retouching with a different crop

One possibility could be B/W, but only if the photo looks good and has a slight colour tone

Cropping the image

Focusing the subject

Colour correction

White balance

Image straightening

Blemish removal

Skin smoothing and wrinkling

Eye illumination

Elimination of disturbing elements

Sky change

Change background

Do not crop people or things  
in the foreground

Rejecting inappropriate images

The second one retouched with a different crop.



2024

Some processing was done with an AI version.  
Generative Filling and Expansion



## Something New

The latest iteration of our PRO service now affords subscribers an array of options from which to select. Upon making their choice, the corresponding icon will be exhibited on the Dashboard. Members must then follow the on-screen guidance to carry the process through to completion.

Should the image not be amenable to editing or inappropriate for the requested posture, it must be rejected



Skin retouch



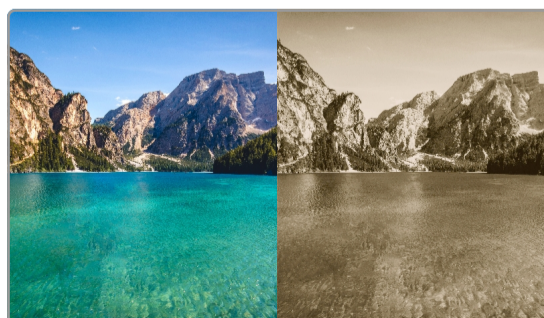
Professional



Only you



Food



Vintage



Selling items.





Skin retouch

Skin Retouch is mainly used to smooth out any wrinkles on your face, clear up any spots or blemishes, and give your skin an overall glow. It helps make your complexion look fresher and more radiant by reducing the appearance of lines and dark marks. The end result is skin that looks rejuvenated and youthful.



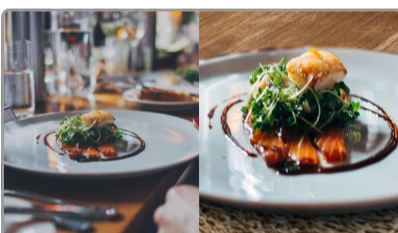
Professional

Professional is a service that aims to transform a regular photo into a professional photo suitable for a presentation. The result is achieved by removing the background and adding a uniform one with a slight shadow. This operation can only be carried out if the shot allows it. Any shadows, imperfections or unsuitable clothing would negate the desired effect.



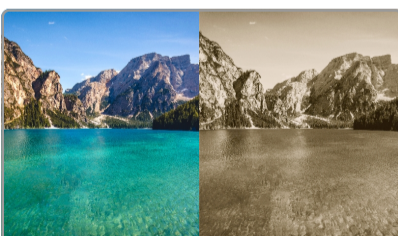
Only you

Focusing solely on one character can be tricky. Make sure other elements don't distract from them. The audience needs to be clear who the main people are without any confusion. Extra characters or details around the edges risk confusing people or splitting focus. Best to streamline everything else so the key player stays sharp.



Food

You know, food photography these days is all about making those Instagram shots look their best, innit. Usually the plates of food need to be styled up a bit so they look more appetising. Often things that distract or mess with the composition gotta be taken out. And the colours are always more vibrant than normal as well. Gotta draw people in with nice bright photos that make 'em want to tuck in!



Vintage

A classic revisited. Vintage photo is a treatment to give photos an old style but it can also look really cool, it depends on the subject and the intensity of the dominant color. Using vintage photo effects you can make modern pictures look older which gives them a retro vibe.



selling items

Touching up with outlines mainly helps with selling items. Things need to look clean and clear when someone looks at the image, and sometimes ya gotta rebuild missing bits. It's all about making sure folks can see exactly what they're getting when they're looking at a photo of something for sale. You want the object to really pop out at them so they know exactly what they're buying.



Customer's Original



## Delivered images

1



- Colour Adjustment
- White Balance
- ☆ Skin Smoothing And Wrinkling

2



- Colour Adjustment
- White Balance
- ☆ Skin Smoothing And Wrinkling





Customer's Original



## Delivered images

1



Colour Adjustment

White Balance

☆ Background Replacement

☆ Elimination Of Suit Pleats

Cropping Image

2



Cropping Image

☆ Colour Adjustment

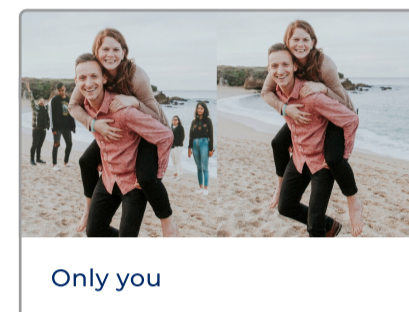
White Balance

Increase Image Cropping

☆ Elimination Of Suit Pleats



Customer's Original



## Delivered images



# 1



- Colour Adjustment
- White Balance
- Image Cropping
- ☆ People Removed
- ☆ Blurred Background

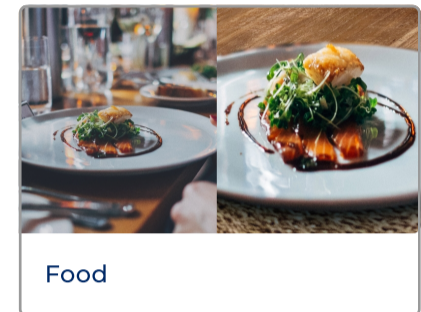
# 2



- Colour Adjustment
- White Balance
- Image Cropping Increase
- ☆ People Removed
- ☆ Blurred Background
- ☆ Leaves Removed



## Customer's Original



## Delivered images

# 1



Colour Adjustment

White Balance

☆ Change Background

☆ Reshaped Plate

☆ New Dish Shadow

# 2



Colour Adjustment

White Balance

☆ Change Background

☆ Reshaped Plate

Image Cropping

☆ New Dish Shadow



Customer's Original



## Delivered images

1



- ☆ Vintage Colour Adjustment
- ☆ Sky Insertion

2



- Sky Insertion
- Image Cropping





Customer's Original



## Delivered images

1



Colour Adjustment

White Balance

☆ Change Background

☆ Shadow Insert

2



Colour Adjustment

White Balance

Change Background

☆ Image Cropping

☆ Shadow Insert



Customer's  
Original

## Delivered images



# 1



- Skin Smoothing And Wrinkling
- Image Straightening
- Colour Adjustment
- White Balance
- Fund Reconstruction

# 2



- ☆ Skin Smoothing And Wrinkling
- ☆ Image Straightening
- Different Colour





Customer's Original

## Delivered images



1



Colour Adjustment  
Skin Smoothing And  
Wrinkling

2



Colour Adjustment  
★ Skin Smoothing And  
Wrinkling  
★ Reflected In The Glasses  
★ Added Background



Customer's Original



## Delivered images



1



- Colour Adjustment
- ☆ Skin Smoothing And Wrinkling
- ☆ Removed The Coloured Strip
- ☆ Darkened The Bottom At The Top
- Re-Centred The Subjects

2



- Colour Adjustment
- ☆ Skin Smoothing And Wrinkling
- ☆ Removed The Coloured Strip
- ☆ Darkened The Bottom At The Top
- ☆ Re-Centred The Subjects





Customer's Original

## Wrong Corrections





# PRO

wrong examples



Customer's Original

## Wrong Corrections



Too Much The Same



Wrong Cutout



Unnatural Colours



No B/W





**IMAGE  
RETOUCH**